

Notices to Mariners, SWEDEN Swedish Maritime Administration



Areas in Swedish Notices to Mariners



SJÖFARTSVERKET

Editorial office
Swedish Maritime Administration
Ufs
601 78 NORRKÖPING
Sweden
tel: 0771 630 605
e-mail: ufs@sjofartsverket.se
Publisher:
Hydrographer Patrik Wiberg

ANNOUNCEMENTS

No Announcements in this booklet.

NOTICES

Bay of Bothnia

* 11569 (T)

Chart: 41, 421

Sweden. Bay of Bothnia. E of Byske. Tåme. Gunnery exercises, October 3 - 14, 2016.

Position: Approx.	64-55N	021-30E	Tåme Firing practice area
-------------------	--------	---------	---------------------------

Gunnery exercises will be carried out at Tåme Firing range during times listed below. During these times the charted danger area "R 58" is closed to navigation within stated distance from shore.

During firing a red balloon is shown from the observation towers. Further information on VHF channel 16, call Tåme skjutfält, or phone +46 921 348405 alt. +46 921 349100.

October	Hours	Range from shore
3	0800 - 1900	9.4 M
4	0800 - 1900	9.4 M
5	0800 - 2200	9.4 M
6	0800 - 2200	9.4 M
7	0800 - 2400	9.4 M
8 - 9	0000 - 2400	3.2 M
10	0800 - 1900	9.4 M
11	0800 - 1900	9.4 M
12	0800 - 2200	9.4 M
13	0800 - 1900	9.4 M
14	0800 - 1600	9.4 M

Not shown in ENC.

Bsp Bottenviken 2014/s06, s37

Försvarmakten, Tåme skjutfält. Publ. 1 oktober 2016

Sea of Bothnia

* 11580

Chart: 524

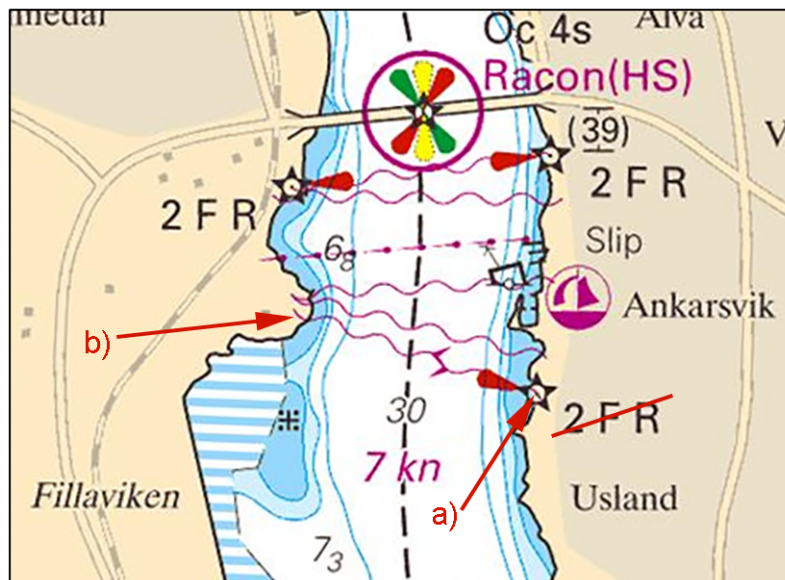
Sweden. Sea of Bothnia. Sundsvall. Alnösundet. Leading lights for cable and power cable withdrawn.

Delete	leading lights for cable 2FR, pos a).	a)	62-25,54N	017-24,27E
Delete	submarine power cable between a) and b).	b)	62-25,66N	017-23,44E

Adm. LoL: C6038-4

Adm. LoL: C6038-41

Bsp Bottenhavet N 2013/s08, Bsp Bottenhavet S 2013/s08



Leading lights for cable, and power cable. Alnösundet.

Sundsvall Elnät AB Publ. 5 oktober 2016

Sea of Åland and Archipelago Sea

11553

Chart:

Finland. Sea of Åland and Archipelago Sea. W of Eckerö. Gisslan. Töllingbådan. Withdrawn cairn and radar target.

Delete	beacon tower	a)	60-09,60N	019-17,92E	Gisslan
Delete	radar target (beacon)	b)	60-11,30N	019-27,00E	Töllingbådan

Bsp Stockholm N 2016/s50

Finnish NtM 2016:23/236. Publ. 6 oktober 2016

Northern Baltic

* 11571 (T)

Chart: 616, 6163

Sweden. Northern Baltic. E of Utö. Gunnery exercise. October 10 - 13, 2016.

See: 2016:618/11559(T)

Position: Approx.	58-54N	018-20E	Utö Firing Danger Area
-------------------	--------	---------	------------------------

Gunnery exercise will be carried out within Utö firing range. The current extension of the closed area is given in the table.

Information during practice times VHF channel 16, call Utö skjutfält, or phone +46 (0)8 501 570 45. Information about upcoming practice times, phone: +46 10-823 18 23.

October	Time	Range from shore
10	0900 - 1800	1.8 M
12	0800 - 1700	1.8 M
13	0800 - 1700	1.8 M

Not shown in ENC.

Bsp Stockholm S 2016/s18, s37

Försvarsmakten, Utö. Publ. 3 oktober 2016

* 11578 (T)

Chart: 621, 622

Sweden. Northern Baltic. Bay of Slätbaken. Stegeborg. Fairway work. Diving operations.

Time: October 25, 2016

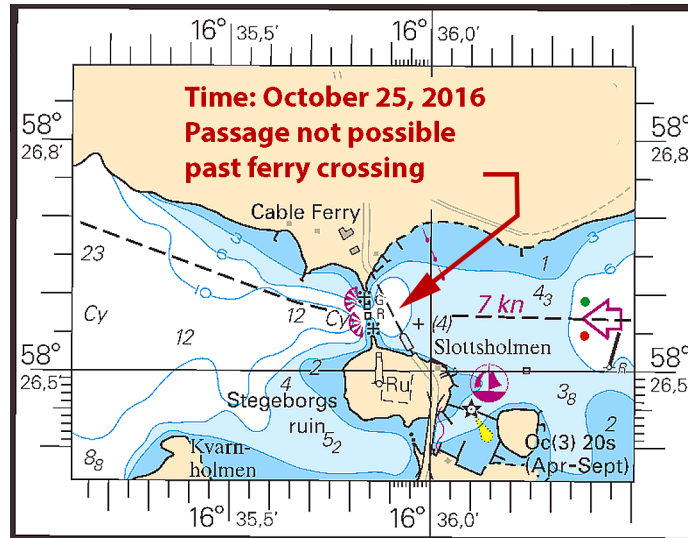
Diving work will be performed in the fairway from cable ferry 'Elvira' on the date above.

Vessels will not be able to pass the ferry crossing as the cables remain taut between each landing point. Continuous radio watch is maintained throughout on VHF Ch 16.

cable ferry at Stegeborg	58-26,579N	016-35,901E
--------------------------	------------	-------------

Not shown in ENC.

Bsp Ostkusten 2015/s63



Cable ferry crossing at Stegeborg

Trafikverket Färjerederiet. Publ. 1 oktober 2016

* 11579 (T)

Chart: 6, 61, 62, 7, 71, 731, 74, 83

Sweden. Northern Baltic, Central Baltic, South-Eastern Baltic, Southern Baltic. Nord Stream. Inspection of gas pipelines in Swedish waters. September - October 2016.

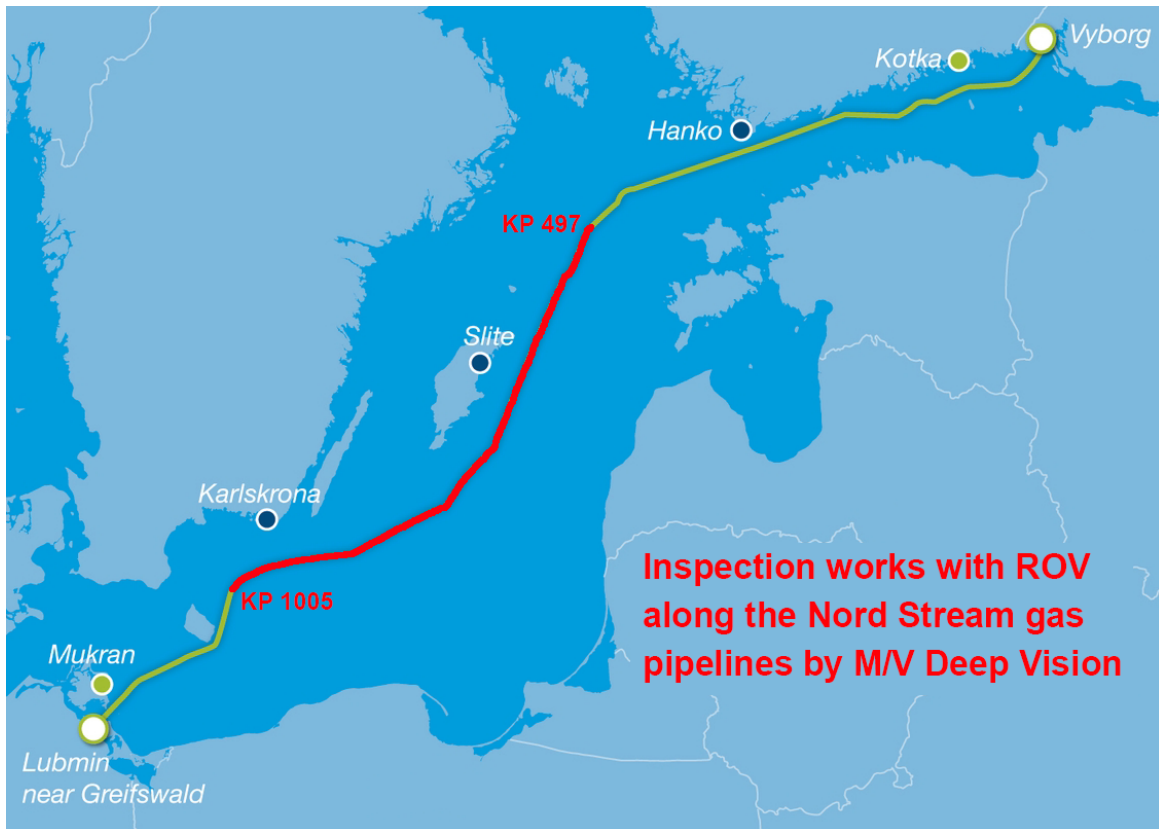
Expired notices: 2016:612/11451(T)

Time: Until end of October 2016

Inspection of the Nord Stream gas pipelines in progress in SW direction on Swedish waters between given positions. The works is performed by MV Deep Vision/2CVC8 and includes survey by means of ROV. 500 m berth requested.

Boundary Sweden-Finland (NE of Gotska Sandön)	a)	58-51,3N	020-28,5E
Boundary Sweden-Denmark (S of Utklippan)	b)	55-32,4N	015-42,8E

Not shown in ENC.



Inspection of pipelines

Nord Stream. Publ. 1 oktober 2016

* 11583

Chart: 6145

Sweden. Northern Baltic. Stockholm archipelago. Nämndöfjärden. Light 'Kofoten'.

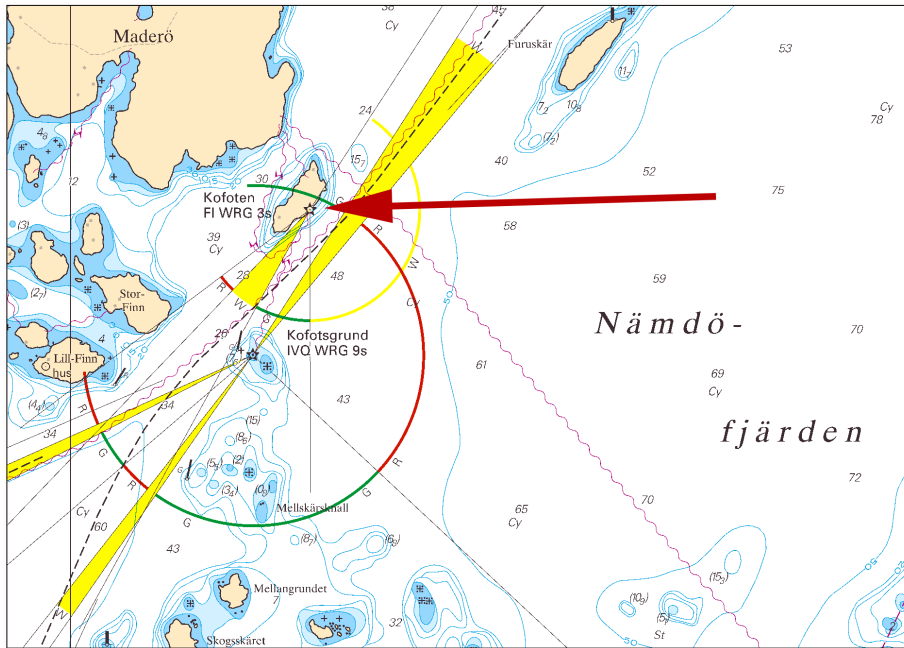
Expired notices: 11567(T)

Light 'Kofoten' back in operation.

Light 'Kofoten'	59-13,41N	018-37,10E
-----------------	-----------	------------

Adm LoL 6664

Bsp Stockholm M 2016/s28, s29, s36, s48



Light 'Kofoten'

Sjöfartsverket, Norrköping. Publ. 6 oktober 2016

* 11587 (T)

Chart: 6163

Sweden. Northern Baltic. Stockholm archipelago. Ornö. Hässelmaras. Jetty. Construction work.

Time: October 10, 2016 - April 30, 2017. Mon thru Fri 0700 - 1900 LT

A new ferry jetty is under construction. Work is conducted from pontoons and working vessels which are clearly visible and illuminated during hours of darkness.

Diving flag 'B' will be hoisted whenever divers are in the water.

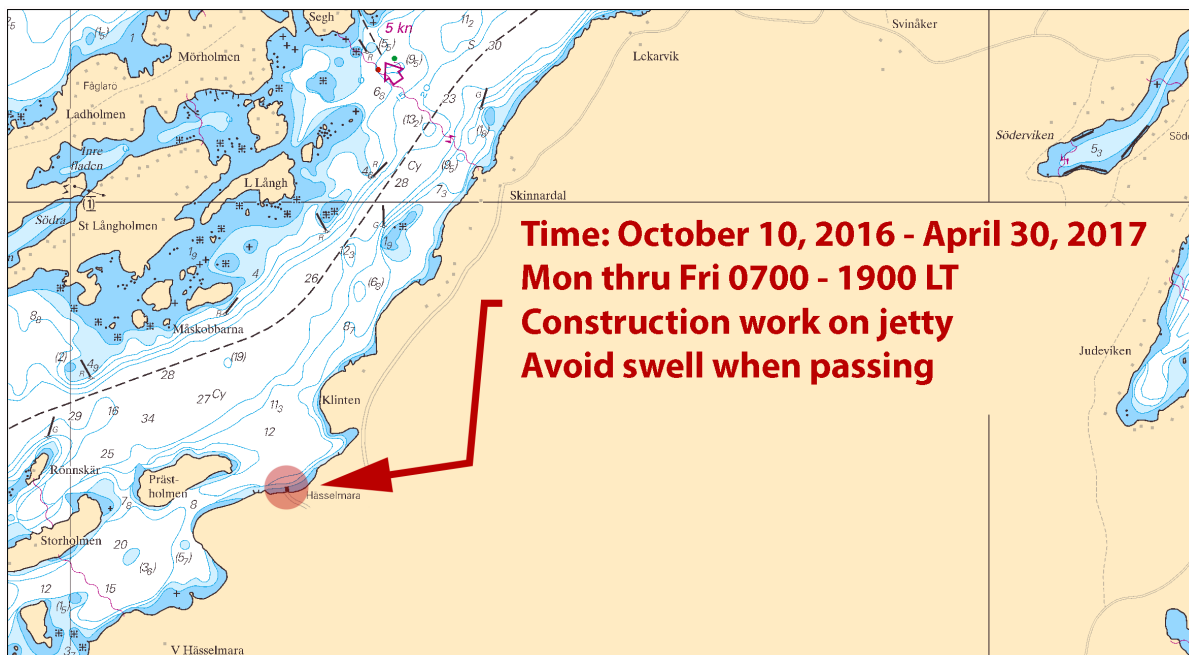
The project is not expected to cause any undue disturbances to vessel traffic. Mariners are, however, strongly advised to pass the site exercising caution - maintaining a low speed in order to minimise swell.

VHF is not used by the contractor.

For additional information, please contact Site Manager Mr Markus Eriksson on ph +46 10-4984603.

working area 'Hässelmaras brygga'	59-05,367N	018-24,942E
-----------------------------------	------------	-------------

Bsp Stockholm M 2016/s42, s43, s44, s45, Bsp Stockholm S 2016/s06, s07



Work at 'Hässelmaras brygga'

SUAB. Publ. 6 oktober 2016

Lake Mälaren and Södertälje kanal

* 11345

Chart: 113

Sweden. Lake Mälaren and Södertälje kanal. Västerås. Amendments to lights, buoys, beacons and anchorage.

Expired notices: 2016:597/11174(P)

1. Light Västerås Djuphamns (sector light and rear light in line) has been rebuilt. The light has been slightly moved, sector limits have been amended and the light has now only one character, Iso WRG 2s (before also F G in line with the front light).

Amend	Q WRG to Iso WRG 2s	a)	59-35,597N	016-31,490E
Amend	sector limits as follows:			
	R 249,2 - 259,2			
	G 259,2 - 267,9			
	W 267,9 - 282,6			
	R 282,6 - 290,4			
	G 290,4 - 303,2			
Delete	2 F G	b)	59-35,59N	016-31,46E

2. The green front light has been moved slightly which result in following amendments:

Move	green front light to c) and insert character Q G	c)	59-35,599N	016-31,531E
Amend	leading line Q G & Iso G, 265-085	d)	59-35,65N	016-32,72E

3. Buoyage in the fairway to Oljehamnen and Västra hamnen have been changed as follows:

Move	port hand spar buoy to	e)	59-35,408N	016-32,328E
Move	starboard hand spar buoy to	f)	59-35,613N	016-31,809E
Move	port hand spar buoy to	g)	59-35,532N	016-31,797E
Move	starboard hand light buoy to	h)	59-35,610N	016-31,743E
Move	port hand lighth buoy to	i)	59-35,542N	016-31,682E
Move	starboard hand spar buoy to	j)	59-35,648N	016-31,680E

4. To mark the limits of the maximum depth alongside the berth at Oljehamnen and at berth 54 in Djuphamnen beacons have been established as follows:

Insert	front beacon, marking a clearing line	k)	59-35,696N	016-31,604E
Insert	rear beacon, marking a clearing line	l)	59-35,711N	016-31,584E
Insert	beacon, painted board	m)	59-35,658N	016-31,554E
Insert	beacon, painted board	n)	59-35,214N	016-31,236E

5. The extent of anchorage "V" has been reduced to only cover waters with a minimum depth of 7,6 m.

Insert	south cardinal spar buoy	o)	59-35,750N	016-32,163E
Insert	south cardinal spar buoy	p)	59-35,823N	016-32,651E
Amend	anchorage northern limit to join o)-p)			

6. Buoyage in the fairway to Östra hamnen has been changed as follows:

Move	starboard hand spar buoy approx. 15 m SW to q)	q)	59-35,771N	016-33,234E
Insert	starboard hand spar buoy	r)	59-35,839N	016-33,183E
Move	port hand spar buoy approx. 20 m NE to s)	s)	59-35,864N	016-33,030E
Move	starboard hand spar buoy approx. 20 m W to t)	t)	59-35,930N	016-33,179E

4. In Östra hamnen the former green and red lights in line have been withdrawn. New red lights in line have been established close W of the former red lights.

The new front light is placed on the wall of a yellow silo. Light specification: Q R 8.5M 21.6m 0.5+(0.5)=1s. Daymark: White, triangular board with red border, pointing up.

The new rear light is placed on the roof of a yellow silo. Light specification: Iso R 2s 8.5M 23.6m 1+(1)=2s. Daymark: White, triangular board with red border, pointing down.

The lights are forming a clearing line in bearing 026,5 - 206,5 which is marking the western limit of the basin.

Delete	green lights in line, 2 F G	u)	59-36,42N	016-33,50E
Delete	red lights in line, 2 F R	v)	59-36,41N	016-33,45E
Insert	front light, Q R	x)	59-36,409N	016-33,425E
Insert	rear light, Iso R 2s	y)	59-36,432N	016-33,448E

Adm. LoL Vol. C 6690-5

Adm. LoL Vol. C 6690-51

Adm. LoL Vol. C 6690-7

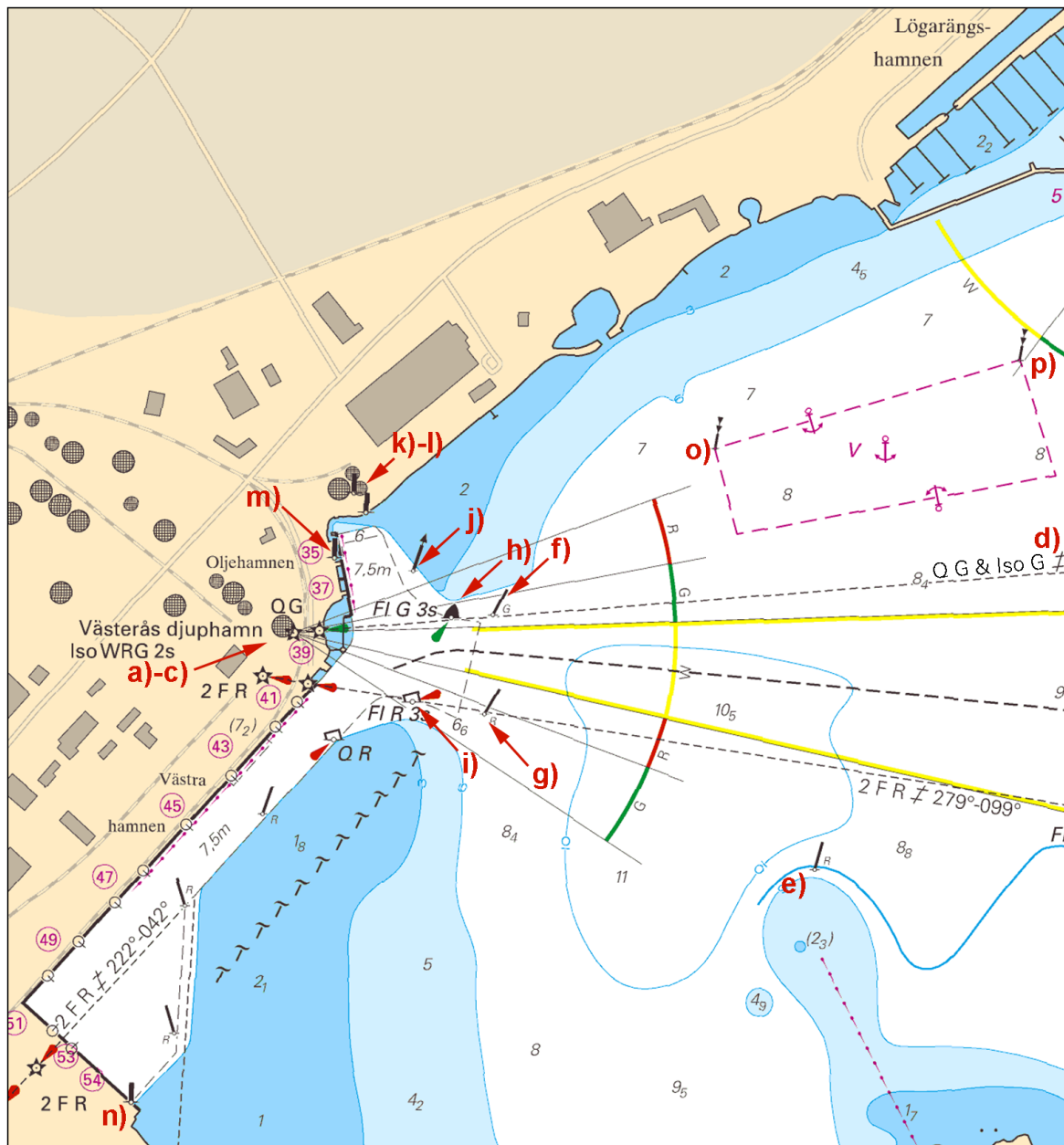
Adm. LoL Vol. C 6690-2

Adm. LoL Vol. C 6690-21

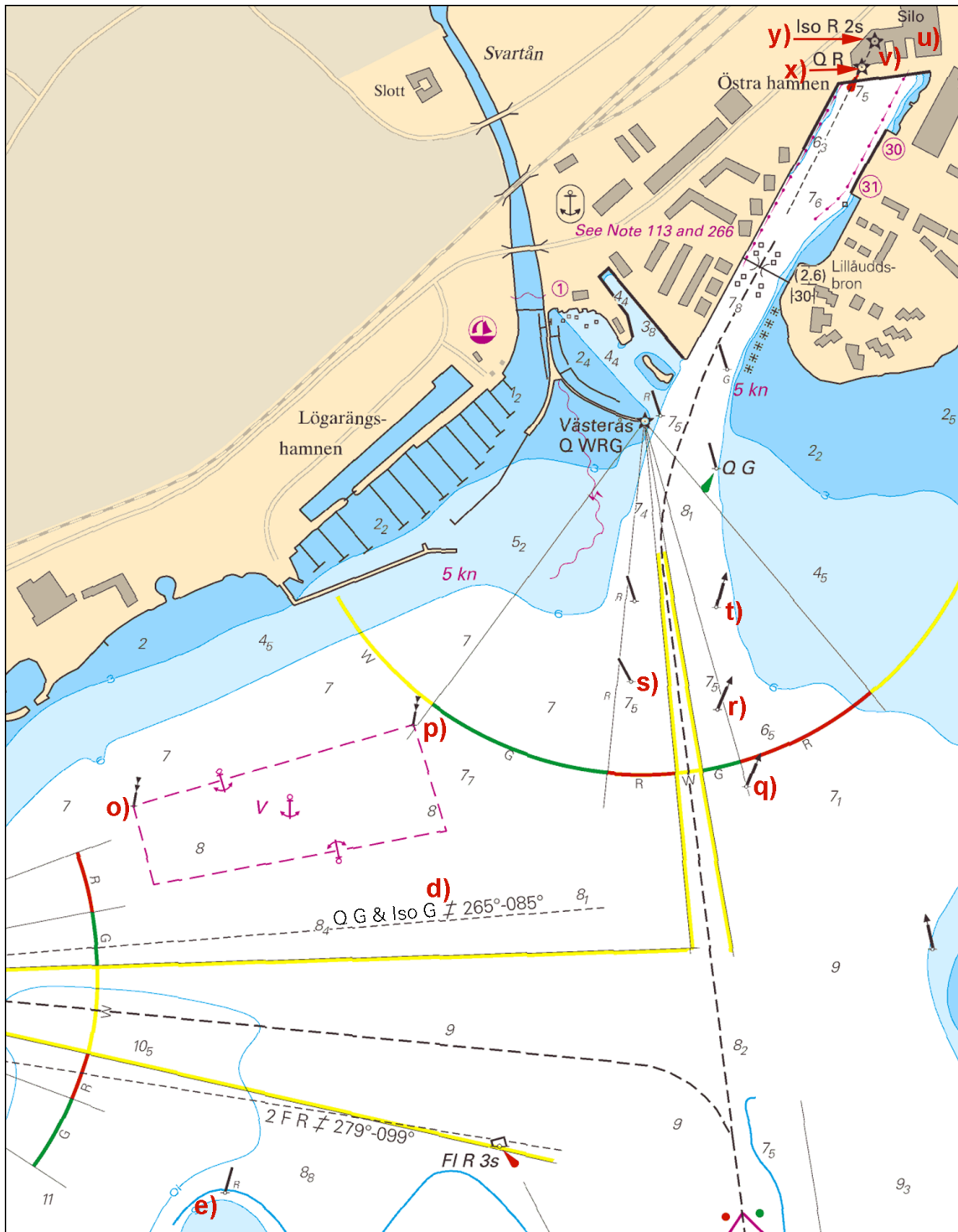
Adm. LoL Vol. C 6690-3

Adm. LoL Vol. C 6690-31

Bsp Mälaren - Hjälmarén 2016/s20, s21, s58



Västerås, western portion



Västerås, eastern portion

Sjöfartsverket, Norrköping. Publ. 5 oktober 2016

* 11581 (T)

Chart: 6181

Sweden. Lake Mälaren and Södertälje kanal. Södertälje kanal. Extensive works in progress. Deepening and widening. Amendments to lock, bridges dolphins etc. "Mälarpjektet".

Expired notices: 2016:617/11541(T)

Time: Until autumn 2019.

Extensive works are in progress in Södertälje Canal. The works include widening and lengthening of the lock, new bridges, dolphins and pile fenderings, dredging and reinforcement of the embankments etc.

The works will at times incur hinder and activities that will cause interferences to shipping.

For information about current works, please call SÖDERTÄLJE CANAL, VHF Ch 68.

Works will take place at various locations between a) - b)	a)	59-10,9N	017-39,4E	Igelstaviken
	b)	59-13,6N	017-36,5E	N of Linasundet

Bsp Mälaren - Hjälmaran 2016/s29, s30, s31

Sjöfartsverket, Södertälje. Publ. 6 oktober 2016

Central Baltic

* 11577 (T)

Chart: 731

Sweden. Central Baltic. Visby. Construction works at new cruise pier.

Expired notices: 2016:604/11303(T)

See: 2016:594/11094, 2016:603/11268(T)

Time: September 30 - November 30, 2016.

During stated time, work vessel "Peter Madsen" will operate in Visby harbour with construction of a new cruise ship pier.

Operations are very sensitive to swell.

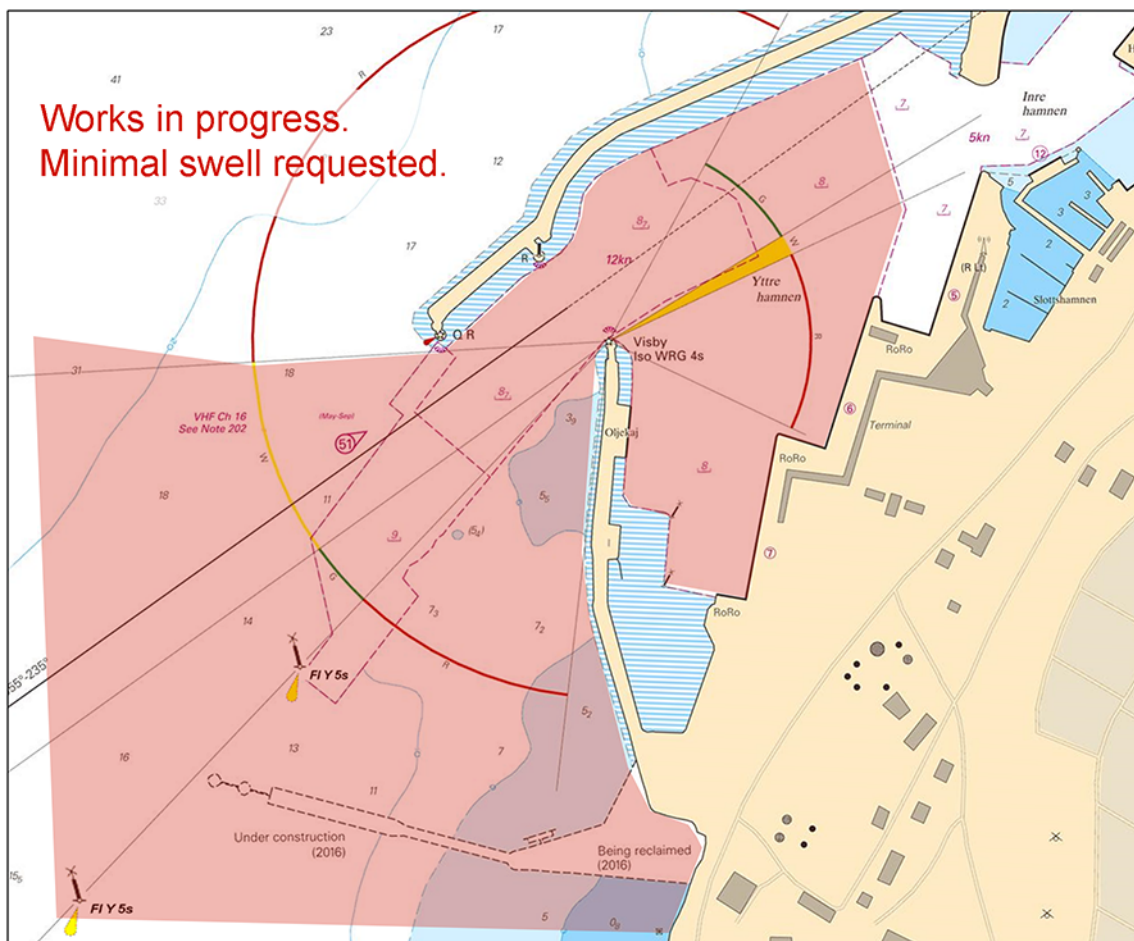
Mariners are advised to reduce speed in the harbour and when passing the work area. Work is expected around the clock.

For further information, contact work vessel "Peter Madsen" VHF Ch 16 or phone +45 20215399.

Visby	57-37,9N	018-16,1E
-------	----------	-----------

Not shown in ENC.

Bsp Ostkusten 2015/s64



Work area, Port of Visby

Region Gotland. Publ. 5 oktober 2016

Skagerrak

* 11589 (P)

Chart: 934

Sweden. Skagerrak. Grebbestad. Leading lights. Svinnäs rear light. Reconstruction. New character.

During november 2016 the leading light 'Svinnäs övre' will be reconstructed to make the lights easier to follow. The light will be raised about 1 meter and the character will be changed from Q to Iso 2s. The lower light Svinnäs nedre will remain unchanged.

Light 'Svinnäs övre'	58-40,66N	011-14,62E
----------------------	-----------	------------

Not shown in ENC.

Bsp Västskusten N 2016/s11



Light 'Svinnäs övre'

Sjöfartsverket, Norrköping. Publ. 6 oktober 2016

Lake Vänern and Trollhätte kanal

* 11585 (T)

Chart: 931

Sweden. Lake Vänern and Trollhätte kanal. Nordre älv. Ormo flood barrage. Small boat passage closed.

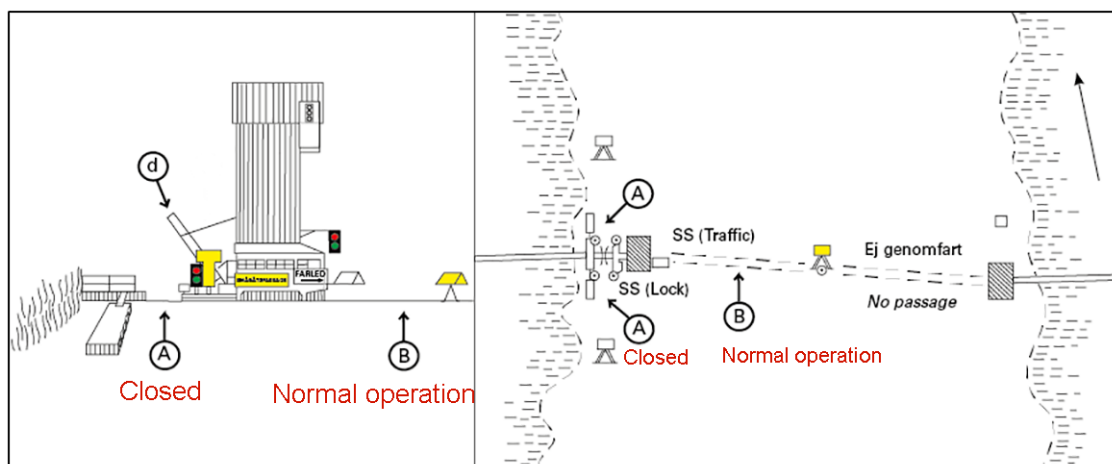
Due to maintenance work on the flood barrage, the passage for small boats (A in picture) will be out of commission indefinitely and the drawbridge (d) will be closed.

All vessels are redirected to the passage for deep draught vessels (B), which will open according to normal procedure.

Ormo flood barrage	57-50,39N	011-54,20E
--------------------	-----------	------------

Not shown in ENC

Bsp Västskusten S 2016/s62



Ormo flood barrage

Vattenfall Vattenkraft AB Publ. 6 oktober 2016

* 11586 (T)

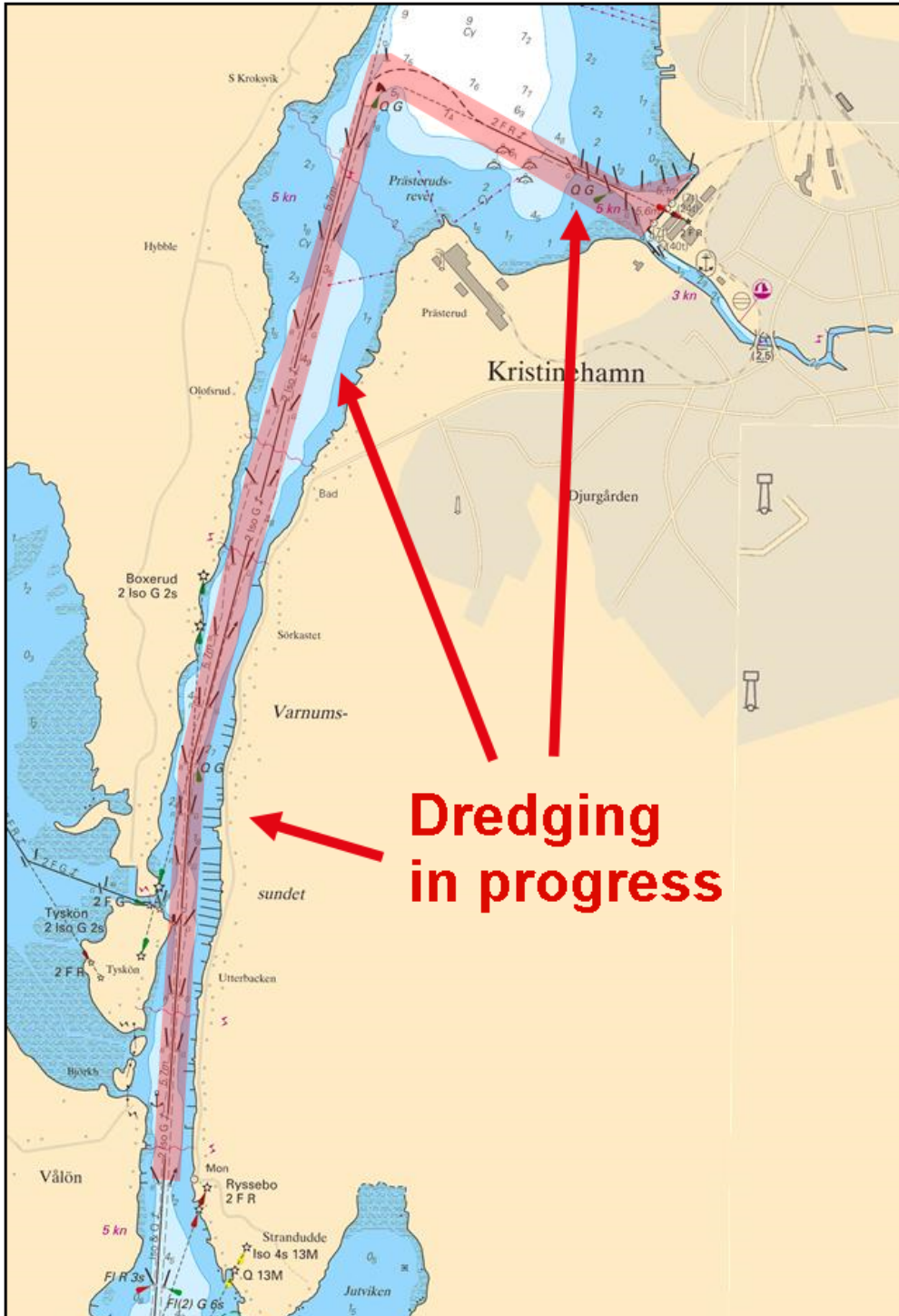
Chart: 132

Sweden. Lake Vänern and Trollhätte kanal. Kristinehamn. Dredging works.

Time: Every day 0700 - 2200 LT from mid-October - mid-November 2016.
Dredging work in progress in the fairway and in the harbour of Kristinehamn.

Kristinehamn	59-18,9N	014-05,3E
--------------	----------	-----------

Bsp Vänern 2014/s14, s15, s47



Kristinehamn

Inshore waters

* 11568 (T)

Chart: 114

Sweden. Inshore waters. Lake Hjälmaren. Hemfjärden. Depth in fairway.

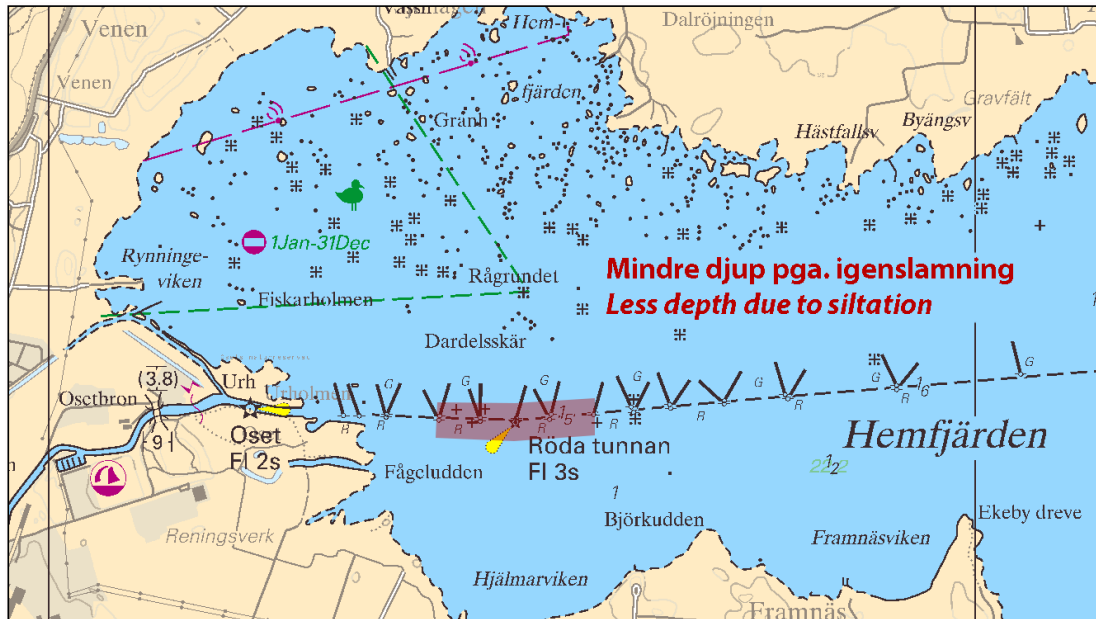
Time: Until further notice

Less depth due to siltation has been reported to exist in the fairway close to light 'Röda tunnan'.

Mariners are requested to pass the area exercising caution until the fairway has been restored by dredging.

light 'Röda tunnan'	59-16,671N	015-17,518E
---------------------	------------	-------------

Bsp Mälaren - Hjälmaren 2016/s08



Fairway to Örebro

PRL Sverige AB. Publ. 1 oktober 2016